

# FSG & CPP Installation Quick Guide

This document is a quick guide on how to assemble and install the FSG along with the CPP Portable Lift. For further information on the install, refer to the relevant install manuals for these products.

## Step 1 – Assemble the FSG

Follow the guidelines below for the correct assembly method of the FSG, a two-person assembly is recommended.

- 1.** Determine where the product is going to be installed, and clear the area from any obstacles.
- 2.** Place a single foot onto a level surface and remove the star handle from its fixing.



- 3.** Insert the bottom of the support post into the foot as shown. Ensure to use both hands to support the post while inserting.



- 4.** Insert the star handle through the foot and post assembly and secure tightly.



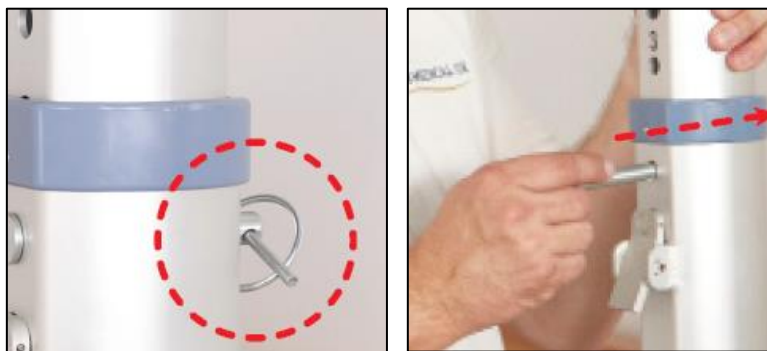
5. Repeat steps 2 – 4 for the other foot and post assembly, and position them approximately 2.5m apart.
6. Place the track onto the support posts using the locating pin on the posts to align the track correctly.



7. Secure the track to the support posts by tightening the star handles as shown. This should remove lateral movement.



8. To adjust the height of the gantry, first remove the safety and lynch pins found on both support posts.



9. Press the latch found on the support post and raise the track vertically until the desired height has been reached. (This must be done on both posts)



- 10.** Once the desired height has been reached, release the latch and ensure it locates into the nearest hole found on the moving post. (Ensure this is done on both support posts and that the posts are set to the same height).



- 11.** Re-insert the safety and lynch pins into both support posts.  
**12.** If required, adjust the self-levelling screws to improve stability.



## Step 2 – Attach the CPP

Follow the guidelines below for the correct commissioning method for the CPP.

- 1.** Place the portable lift on a secure and soft surface such as a bed or chair.
- 2.** Using the handset or membrane, extend the lift tape to allow enough slack to attach the QRS hook to the trolley while the portable lift remains in position.
- 3.** Locate the QRS hook into the reacher pole and tension the lift tape to open the QRS latch.



- 4.** Using the reacher pole, raise the hook and secure onto the trolley.



- 5.** Remove the reacher pole and store in a safe place.
- 6.** Using the handset or membrane, raise the portable lift off the chair to a suitable suspended height.



Installation complete.